



Matthew R. Brown, AIA

President, Formation Group, Inc.
515.313.7925 cell
mattb@formationgroup-us.com

Iowa native Matt Brown earned a Bachelor of Architecture degree from Iowa State University and is a registered architect in the State of Iowa. His 20-plus years of universal built environment experience includes project development planning, budgeting, incentive application, site feasibility, building programming, building design, construction project management, move coordination and physical building operations. He's worked in five states: California, Louisiana, Maryland, Wisconsin and Iowa.

Most notable is Matt's leadership in development and operation of the Wellmark Headquarters, which earned a USGBC LEED platinum rating (world's largest single user office building certified as platinum under the NC 2.2). Matt and his team created and implemented building operations and energy efficiency strategies to extend the life of building systems while achieving reduced operations expense.

Prior to joining Wellmark, Matt served as construction manager and vice president for Wells Fargo Home Mortgage Corporate Real Estate, in West Des Moines. He oversaw construction projects totaling over 2 million square feet and a combined budget of \$421 million. The primary focus was the \$260 million, 965,000 square foot Wells Fargo West Des Moines Campus Project. Matt practiced architecture with a regional design firm before joining Wells Fargo.

Professional + Civic Affiliations

American Institute of Architects, Member
2001 to present

Council Member, Johnston City Council
2012 to present

Neighborhood Development Corporation
2008 to present, Executive Board President 2014

Board Member, Downtown Community Alliance
2013 to 2016

Executive Board Member, Operation Downtown
2009 to 2013

Professional Registrations

Iowa Registered Architect: #05289
National Council of Architectural Registration
Boards: Certificate # 54,8111

Speaking Engagements

Drake University Innovation and Leadership Conference, Sustainability, LEED or Green? / Des Moines, Iowa – 2008

Minnesota Greening the Heartland Conference, Recycle, Reuse, Reduce – Saving Our Water One Flush at a Time / Minneapolis, Minnesota – 2010

Central Iowa Real Estate Brokers Conference, Wellmark LEED Platinum Project Development / West Des Moines, Iowa – 2011

AIA Iowa Convention, Wellmark Corporate Headquarters – A Case Study in Building Performance / Des Moines, Iowa – 2012

IAEE (Iowa Association for Energy Efficiency) Panel Sustainability Discussion, Setting and Maintaining High Sustainability Goals Through Construction and Design / Des Moines, Iowa 2012

ASHRAE National Convention, Design to Ensure Building Performance: A LEED Platinum Case Study / New York City, New York – 2014

AIA National Convention, Wellmark Corporate Headquarters – Living the Low Energy Life / Chicago, Illinois – 2014

USGBC Iowa (United States Green Building Council), Wellmark Corporate Headquarters – A Case Study in Building Performance / Des Moines, Iowa – 2014

IAEE (Iowa Association for Energy Efficiency), Wellmark Corporate Headquarters – A Case Study in Building Performance / Altoona, Iowa – 2014



Vice President Property Management, Wellmark, Inc.
2011-2016

Responsibilities included oversight of Wellmark properties in Iowa and South Dakota, exceeding 700,000 square feet of office space. Actively led a diverse team responsible for construction, development, physical security, business continuity, space strategy/planning (including agility), logistics, mail services, foodservice, vending and corporate travel (aircraft).

Properties managed while in this role include 13ksf Cedar Rapids new office, 60ksf Sioux City office remodel, 32ksf Sioux Falls office remodel and developed a 30ksf agile space in the Wellmark headquarters.

Construction Director, Wellmark, Inc.
2007-2011

Responsible for the development of \$250 million corporate headquarters, which included site assembly, incentives negotiation, contractor selection/management, design, budget management, physical move of the business and operations setup. Building is 604,000 square feet office with 2150 stalls of deck parking. Project earned a USGBC LEED platinum rating.



Vice President Major Construction, Wells Fargo Home Mortgage, Inc.
2002-2007

Lead the implementation of over \$420 million of new construction and remodels, including management of staff relocation. Experience includes work in Arizona, California, Iowa, Louisiana, Maryland and Wisconsin. Project list includes the development of the West Des Moines Campus, with a budget of \$260 million, 960,000 square feet and a site of 156 acres.



Jefferson High School Fine Arts and Science Classroom Addition

Cedar Rapids, Iowa

Architect responsible for conceptual design and technical document preparation of 60,000 square foot addition. Project construction cost \$5.5M, completed August 2003.

Urbandale Middle School Performing Arts and Special Needs Classrooms

Urbandale, Iowa

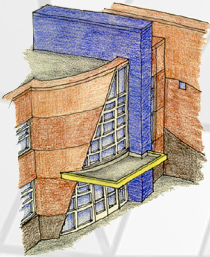
Project architect responsible for all phases of design and construction of 8500 square foot, \$1.2M expansion, completed August 2002.



United States Department of Agriculture

Ames, Iowa

Project team member responsible for the conceptual building design of master planning efforts for the ten-year plan to completely rebuild facilities in Ames, Iowa. Total project scale estimated at \$439M.



Viola Gibson Elementary School

Cedar Rapids, Iowa

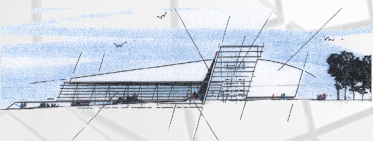
Architect responsible for conceptual and technical design of the exterior façade, completed in 2002. Project construction cost \$7M.



Prairie Meadows Racetrack and Casino

Altoona, Iowa

Project and design architect responsible for all phases of design and construction administration for 60,000 square feet casino expansion completed in 2001. Total project cost \$20M.



The Des Moines Register, Remote Printing Facility

Des Moines, Iowa

Architect responsible for design development, construction documents and construction administration of 120,000 square foot printing and distribution facility, completed in 2000. Total project cost \$12.5M.